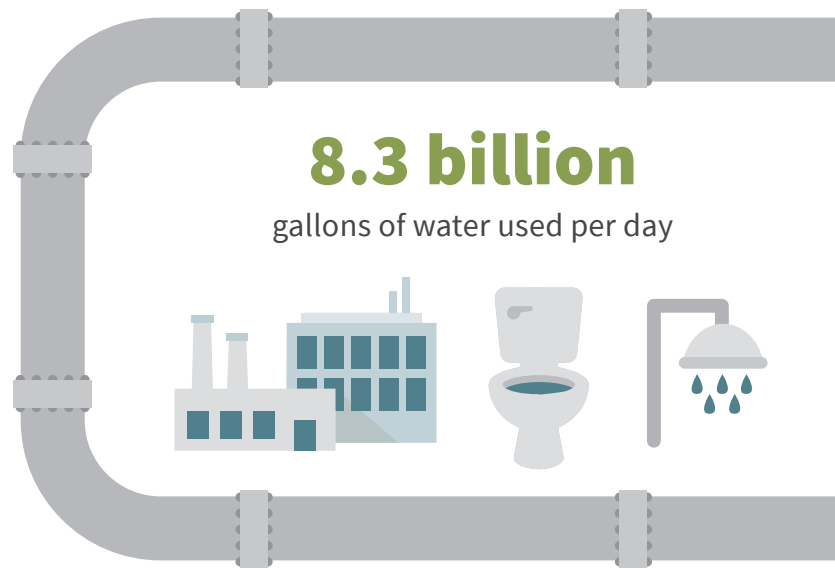
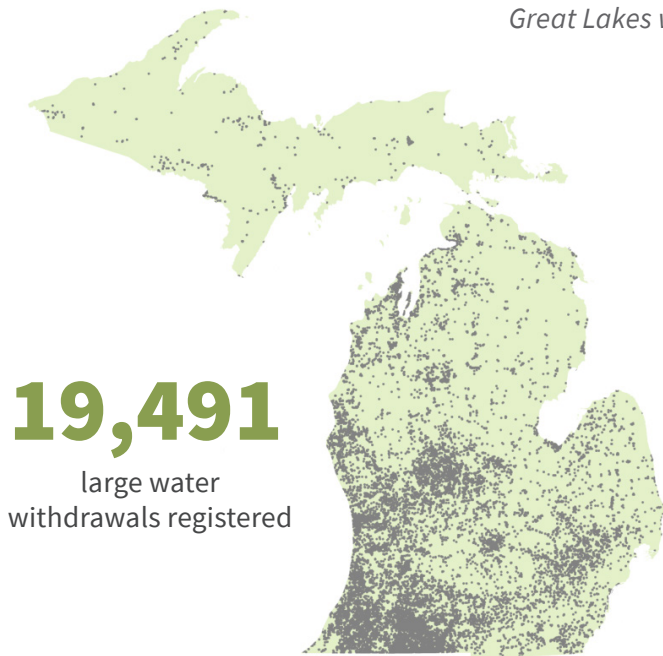


# WATER RESOURCES DIVISION

## WATER USE PROGRAM

The Great Lakes states and provinces collectively manage the water resources of the Great Lakes Basin. The Water Use Program carries out the Michigan laws that support this cooperative management by assessing and permitting large withdrawals, collecting annual water use data, and monitoring water levels and flows for impact from withdrawals.

The work of the Water Use Program provides the legal basis for the Great Lakes Compact to prohibit diversions of Great Lakes water to other regions.



**6,721 new withdrawals**

evaluated since 2009

**2,373 site-specific  
review evaluations**

performed by EGLE since 2009

**97 withdrawals**

denied or retracted since 2009  
due to likely adverse impact

**225 stream flow  
measurements per year**

**30 water use conflicts  
investigated per year**



**EGLE** MICHIGAN DEPARTMENT OF  
ENVIRONMENT, GREAT LAKES, AND ENERGY

MICHIGAN.GOV/WATERUSE | 800-662-9278

The Michigan Department of Environment, Great Lakes, and Energy does not discriminate on the basis of race, sex, religion, age, national origin, color, marital status, disability, political beliefs, height, weight, genetic information, or sexual orientation in the administration of any of its programs or activities, and prohibits intimidation and retaliation, as required by applicable laws and regulations.

To request this material in an alternative format, contact [EGLE-Accessibility@Michigan.gov](mailto:EGLE-Accessibility@Michigan.gov) or call 800-662-9278.

06/2022